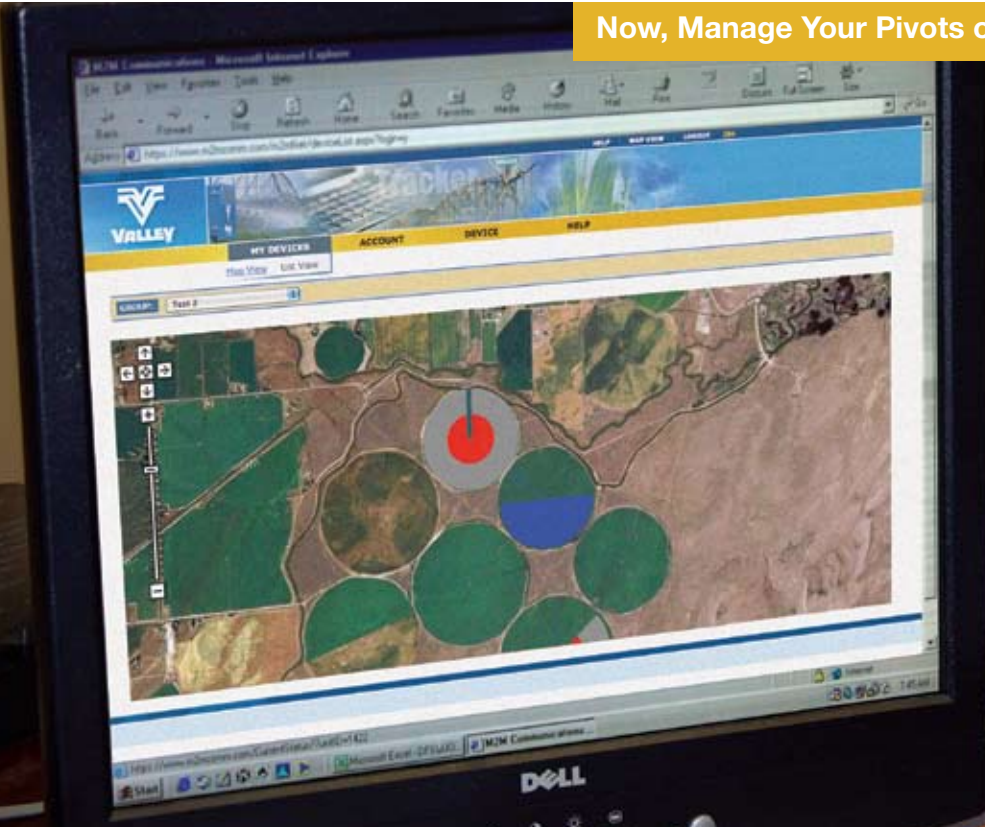


Valley Controls[®]



Now, Manage Your Pivots on the Web with Google Maps



RELIABLE
DRIVE TRAINS

DURABLE
STRUCTURES

PRECISE
APPLICATIONS

ADVANCED
TECHNOLOGIES

RESPONSIVE
DEALERS

Communication Options

Fit your operation and your life



As a grower, you know getting water to your crops when and where it's needed is key for increased yields. In the past, this meant looking forward to additional costs and worries during peak irrigation times – early morning pivot checks, increased fuel costs from those additional trips to the field, even adding additional labor during the summer months. Some days, it seemed like your irrigation equipment had all the control. It was just a part of the business – until now.

Valley[®] Controls are designed to help you regain control by virtually eliminating unnecessary visits to the field.

Program – With a variety of easy-to-use program options that fit the size and condition of your operation and the pace of your life, you'll be able to conserve energy and time while greatly improving your yield potential.

Monitor – Monitor all of your equipment with easy-to-use tools that provide an at-a-glance view of your irrigation set-up to ensure more efficient, less stressful irrigation. Complete safety checks and monitor field position.

Control – Our communications options bring advanced technology and give you “control-on-the-go” 24/7 via cell phone or Internet connection. Start and stop your irrigation equipment, change direction and application depth, plus much more.

Relax – From monitoring your equipment and accessing alarm indicators to programming your irrigation machines, these options deliver peace of mind that comes from knowing you're operating at maximum efficiency, saving resources and reducing downtime.



Free up your time to relax and enjoy all the things you'd rather do than visit your irrigation equipment in the field.

Exceptional Reliability and Durability

Valley is known worldwide for the quality and durability of its irrigation equipment and Valley communication technology is no different. Each component is engineered, constructed and field tested to ensure a long life and expandability in the field and to make your investment last far into the future.





GPS Ready Control Panels - Technology Making You More Efficient.

Valley now offers the irrigation industry's first line of GPS Ready irrigation control panels.

- Pro2 Pivot Control Panel
- Select2 Pivot Control Panel
- AutoPilot Linear Control Panel

GPS Ready controls now mean growers can easily take advantage of the benefits that GPS Technology offers:

- Enhanced management capabilities
- Precision application of water, fertilizers and crop inputs
- Higher yield potential and lower input costs



Producers can program GPS Ready control panels to apply different levels of water, fertilizers or other inputs within the same field based on data the GPS receiver collects and feeds to the control panel. In turn, producers don't have to invest in applying inputs where they aren't needed or can apply extra if required. GPS Ready technology for center pivots and linears provides growers with better management tools and with the high costs of fuel, fertilizer, water and other inputs, this technology is a logical choice.



GPS Ready control panels give growers another choice in monitoring where your irrigation machines are in the field:

- Add-on GPS Positioning packages available for pivots and linears
- Requires a GPS Ready control panel
- GPS position calculations performed right in the control panel
- Accurate GPS position information gathered from the cart for linears or the last drive unit for pivots
- WAAS (Wide Area Augmentation System) enabled Garmin receiver provides accuracy of +/- 10 feet (3 meters) with most installations at greater accuracy
- Compatible with different GPS receivers to meet your accuracy requirements



Remote Management at It's Best

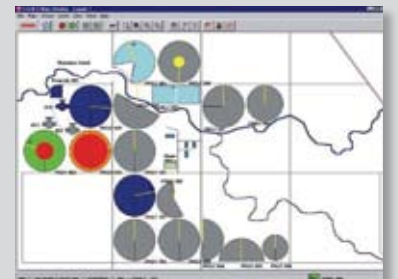
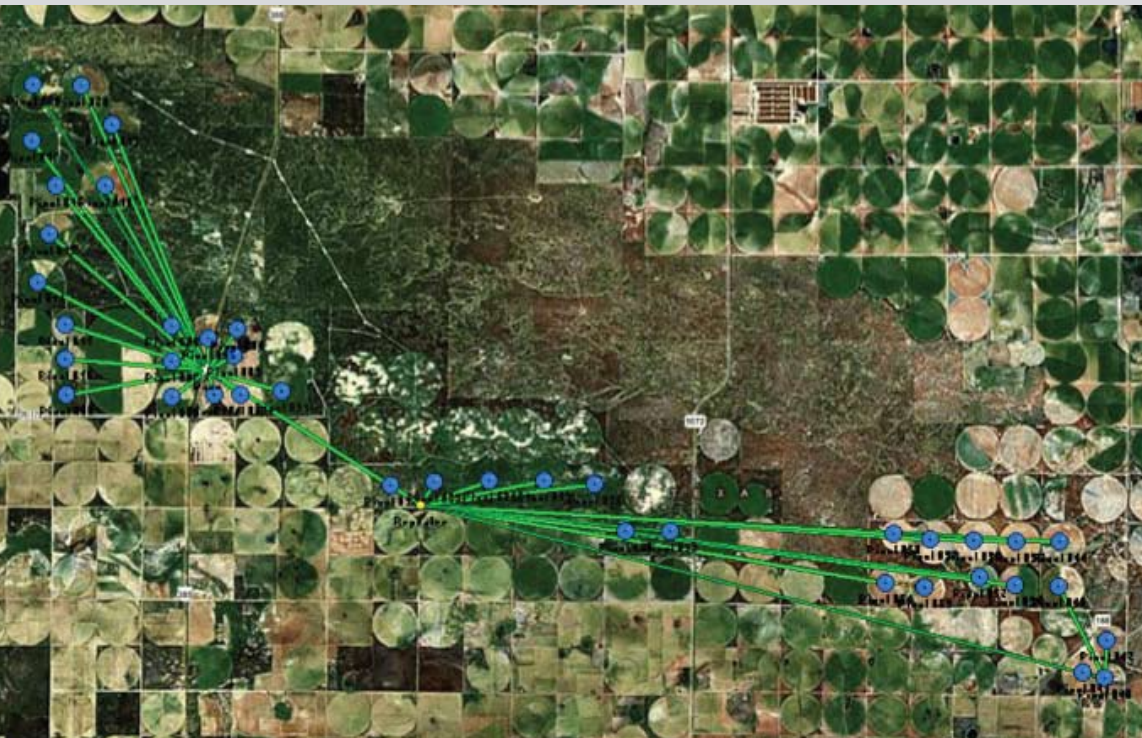
Individually engineered to meet your needs

Valley BaseStation2

BaseStation2 is a centralized irrigation management system for your office computer, custom-designed to suit your needs by Valmont Engineering. Whether you are looking to monitor one to several irrigation machines, BaseStation2 gives you flexibility and reporting mechanisms like no other.

Easily control pivots, check pivot status at-a-glance, monitor and control pumps, valves and other devices without the need for additional labor or trips to the fields. Generate reports for year-to-year comparisons and look at your control panel the same way you would see it in the field.

Differing from the Valley Tracker, the BaseStation2 utilizes private radio frequencies which allows for direct, reliable communication without the need for constant Internet access.



Telemetry designs engineered by Valmont outline precise positioning for irrigation management. Graphic representations easily show position, direction, alarms and running wet or dry.

Key features include:

Full Control Capabilities

Control your pivot through commands with a simple mouse click. The monitor looks the same, as if you were at your control panel in the field, and also lets you monitor auxiliary input status.

Remote Monitoring

Monitor all pivots on one screen with mapping to match your existing farm conditions to see an at-a-glance view of your pivot status, including the current position and direction of travel.

Reporting Functionality

To support farm management efficiencies, the BaseStation2 offers four different reports including Totals, Status Change, Current Status and Configuration Reports, as well as showing you the total amount of flow on your farm. You can print reports directly or export to open in Excel.



Be everywhere at once with Valley® BaseStation2.

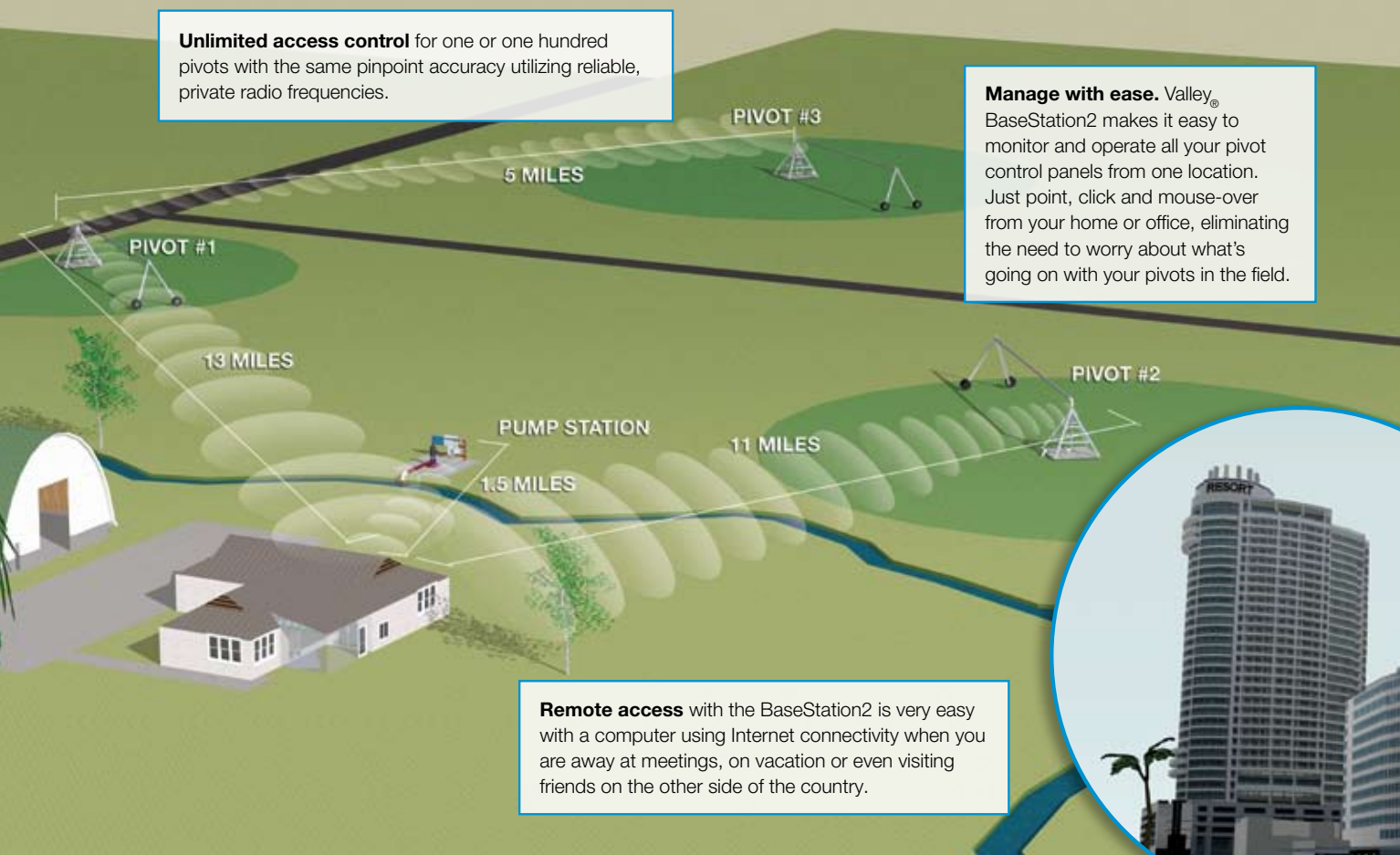
To see how BaseStation2 can put you back in control, order a FREE BaseStation2 demo DVD today. Email your mailing address to: irrigation@valmont.com

Real Time Updates for Reliable Management

Unlimited access control for one or one hundred pivots with the same pinpoint accuracy utilizing reliable, private radio frequencies.

Manage with ease. Valley® BaseStation2 makes it easy to monitor and operate all your pivot control panels from one location. Just point, click and mouse-over from your home or office, eliminating the need to worry about what's going on with your pivots in the field.

Remote access with the BaseStation2 is very easy with a computer using Internet connectivity when you are away at meetings, on vacation or even visiting friends on the other side of the country.



Alarms

Receive alarm messages on your cell phone from the BaseStation when a problem occurs saving downtime and trips to the field.

PanelLink

Now you can expand your BaseStation's vision further. This BaseStation feature allows you to control and monitor your mechanical control panels-Valley and other brands, as well as computerized non-Valley panels.

When a change in status arises, a real time update message can be sent from the PanelLink to the BaseStation2 computer. The BaseStation2 software interprets the messages and responds automatically based on the configurations set to your cell phone or computer.



Tracker2 (Digital)

With Tracker, alarm messages are sent to your cell phone and/or to the Web, delivering important information to you wherever you are.

Tracker is compatible with all Valley control panels and most competitive panels. There is a low monthly service fee, plus you have the ability to change to an off-season rate.



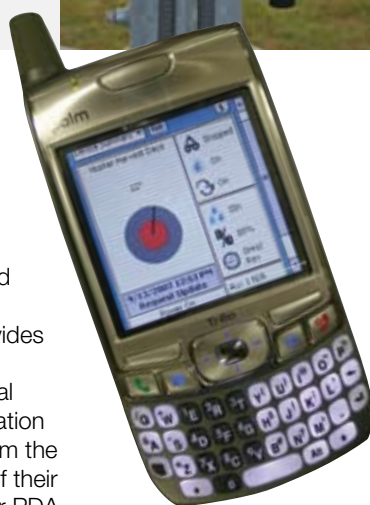
Tracker Mobile

The **Tracker Mobile** uses Web access to retrieve monitoring and control options from the Valley

Tracker. It provides irrigators with additional visual access to irrigation information from the convenience of their Smartphone or PDA.



Tracker *Mobile* features easy-to-understand color-coded symbols, performs all control and monitor options currently available to the grower. Users can view the status of all of their irrigation equipment under a single menu and no longer have to make a phone call to every individual pivot to check its status.



TrackerSP (Digital)

This advanced version of the Tracker communication tool offers additional functionality control. With Tracker SP, you can review field diagnostics, monitor and control application depth, turn equipment on and off and change direction from your cell phone or Internet connection.

Tracker SP can be used with the Select2 or Pro2 panels and mounts easily inside the panel.

The Tracker Mobile demo is available online at <http://m.valleytracker.com>

Make Your Choice

A full selection of easy-to-use Valley control panels

Valley now offers the irrigation industry's first line of GPS Ready irrigation control panels. Growers can easily take advantage of the benefits that GPS Technology offers. Enhanced management capabilities and precise application of water, fertilizers and crop inputs with a potential of higher yield and lower input cost.

Valley Pro2 Panel - GPS Ready

The most advanced panel showcases irrigation technology at its best.

The Valley Pro2 Panel showcases irrigation technology at its best. Though it utilizes advanced technology, it gives you a simple set of tools for the highest level of control and monitoring both in the field and remotely.

Features include fully programmable functions based on date, time and position. Additional inputs allow you to conserve and manage available water and get precise water application, fertilization and chemigation. The flowmeter option helps you track your overall water usage.

A full backlit screen display on the panel, and advanced sensory and auxiliary functions make it easy to use when it suits your schedule – day or night.

Advanced field diagnostics reduce your downtime and service calls and provides specific pivot status when you want it. The **5-year industry exclusive warranty** eliminates worries and protects your investment.

The Pro2 Panel can utilize the most advanced functions of Tracker, TrackerSP and the BaseStation2, giving you round the clock updates and control options from cell phone, Internet or home office computer.



Remote Communications options:

BaseStation2
Tracker2
TrackerSP



Valley Select2 Panel - GPS Ready

Automatic operations allow more monitoring and control.

The Select2 control panel enhances your water management capabilities allowing for conservation of water and less time spent in the field with its programmable features. Select2 incorporates the same field proven processor technology as the Valley Pro2, providing you with the reliability and durability you expect from Valley.

A backlit keypad and display is standard for operation in dark conditions. End gun, stop-in-slot and auto reverse positions can be easily set right in the control panel. Other features include pivot position reporting and field sector controls that allow you to change water application for different crops or soils and special field diagnostics that reduce your downtime and service calls by keeping you informed of pivot status at all times, even remotely. The 3-year warranty gives you peace of mind and low long-term operating cost.

This panel is designed to work with Tracker or TrackerSP, allowing you to monitor status and perform basic controls from your cell phone or Internet connection. It does connect to the BaseStation2, but with limited functionality.



Remote Communications options:

BaseStation2 (Limited Capabilities)
Tracker2
TrackerSP



Valley ClassicPlus Panel

A panel that can grow as your needs grow.

The Valley ClassicPlus Panel offers easy-to-operate switches for manual operation and is available on corner and linear equipment.

Features include mechanical auto reverse, a mechanical pressure switch that allows you to monitor for low pressure, percent timer dial to control application and optional mechanical switches to set pivot direction.

For monitoring 24/7 from any location, connect to the Tracker2™ remote communications device.



Remote Communications Options:

- Tracker2
- BaseStation2 with PanelLink



Valley Classic Panel*

Entry-level panel designed for in-field control.

The Valley Classic Panel offers the lowest initial investment and provides push button, manual operation. It is designed for growers with center pivots only.

Features include percent timer to control application and optional mechanical switches that allow you to set pivot direction and monitor for low pressure.

Observe your pivot and perform basic controls on this panel from your cell phone through the Tracker remote communications device option.



Remote Communications Options:

- Tracker2
- BaseStation2 with PanelLink

*Available on 7000 series only and aftermarket parts sales.

Extend the Life of Your Aging Pivots

Your Valley dealer is there to find technology solutions for your situation – from new equipment installation to communication upgrades, Valley is there every step of the way. No matter your pivot brand, Valley has a conversion solution to fit your irrigation needs.

Valley Control Conversions

Look to Valley and see how a panel upgrade can improve your performance for a minimal investment. Enhance your irrigation management options while conserving and managing time and water. And, enjoy the benefits of the best warranty in the industry.

Contact your Valley dealer today for more information on the simple and money-saving conversion options and experience the performance and reliability that only Valley can give you.



Control Panel Upgrade

- A minimal investment for a maximum return in reliability
- 2 panel choices from Valley to perform the basic pivot operations:
 - Valley Classic Control Panel
 - Valley ClassicPlus Control Panel
- 2 GPS Ready panel choices from Valley to perform advanced control needs:
 - Valley Select2
 - Valley Pro2
- A new control panel helps to eliminate electrical shutdowns
- Control your machine safely and efficiently
- Almost all pivot brands can be updated with Valley Control Panel Technology



Reasons to Convert:

- Outdated controls cause problems
- Orphaned machines need parts
- Bring new Valley technology to all your pivots
- Extend the life of your existing pivots
- Remote Pivot management

Convert Your:

- Tower boxes
- Panels
- Remote communications

Tower Box Conversion

- Substantially reduces electrical shutdowns on older pivots
- Almost all pivot brands can be converted
- High value for a minimal investment
- Proven, reliable and durable on non-Valley pivots



Choose the Control Options to Fit Your Operation

	Direct Controls				Remote Controls		
	Classic	ClassicPlus	Select2	Pro2	Tracker2	Tracker SP	BaseStation2
MONITOR							
Pivot on/off	✓	✓	✓	✓	✓	✓	✓
Voltage	✓	✓	✓	✓	✓ ^{***}	✓ [*]	✓
Direction	✓	✓	✓	✓	✓	✓	✓
Safety	✓	✓	✓	✓	✓	✓	✓
Diagnostics	✓	✓	✓	✓		✓	✓ [*]
Application depth %			✓	✓	✓ %	✓ %	✓ [*]
Water on/off	✓	✓	✓	✓	✓ ^{**}	✓	✓ [*]
S I S on/off	✓	✓	✓	✓		✓	✓ [*]
Pressure	✓	✓	✓	✓	✓ ^{***}	✓ [*]	✓ [*]
End Gun			✓			✓	✓
Programs Running				✓		✓ [*]	✓
Field position			✓	✓	✓ [*]	✓ [*]	✓ [*]
Date			✓	✓			✓ [*]
Time			✓	✓			✓ [*]
Hours/revolution			✓	✓			✓ [*]
Auxiliary control status				✓	✓ [*]	✓ [*]	✓ [*]
Percent Timer Status					✓	✓	
SmartPhone					✓	✓	
Alarm feature					✓	✓	✓
Internet connectivity					✓	✓	
GPS Ready			✓	✓			
CONTROL							
Start/stop	✓	✓	✓	✓	✓	✓	✓
Water on/off	✓	✓	✓	✓		✓	✓
Application depth %	✓	✓	✓	✓			✓
Direction	✓	✓	✓	✓	✓ [*]	✓	✓
S I S on/off	✓ [*]	✓	✓	✓			✓ [*]
End gun settings	✓	✓	✓	✓			✓ [*]
Auto reverse/auto stop	✓ [*]	✓ [*]	✓	✓			✓ [*]
Auto restart		✓ [*]	✓	✓			✓ [*]
Write/edit programs			✓	✓			✓ [*]
Auxiliary control	✓ [*]	✓ [*]	✓ [*]	✓	✓ [*]	✓ [*]	✓ [*]
Sector program control			✓				
Sequential program control				✓			✓ [*]
DESIGN							
Modular		✓	✓	✓			✓
Warranty (years)	2	2	3	5	2	2	2
Transient & induced voltage protection			✓	✓	✓	✓	✓

✓ = included

✓^{*} = yes if control panel has functional capabilities

✓^{**} = yes with pressure switch

✓^{***} = yes with transducer



AutoPilot – Linear Control Panel

**IRRIGATION ASSOCIATION -
TOP AG PRODUCT OF 2008**

Irrigation Association award reinforces Valley commitment to technology.

The AutoPilot linear control panel is the first computerized control panel with GPS Ready technology providing positioning for linear irrigation.



GPS Ready Controls

WORLD AG EXPO -TOP 10 RUNNER UP

Technology aids precise application of water, fertilizer and other crop inputs.

The GPS Ready control panels from Valley Irrigation differ from other control panels on the market because they perform all of the necessary GPS position calculations right in the control panel.

Valley Tracker *Mobile*

TOP 10 WINNER

With Valley Tracker *Mobile*, irrigators now have access to the latest technology for remote management of their pivots and linears.

The Tracker Mobile feature is Smartphone technology that uses Web access to retrieve monitoring and control options from the Valley Tracker.



Rely on Valley® Dealers

Responsive dealer service with factory-trained technicians is how Valley minimizes equipment downtime. Dealers are equipped with product training, knowledge of irrigation and local agricultural practices. Also, Valley offers the most comprehensive warranty in the industry.

When you need full control, ease-of-use in the field and communications to support your schedule, be sure to contact your local Valley dealer to see how Valley Controls can help you. Being the world leader in mechanized irrigation equipment, you will not find more easy-to-use, durable or reliable products in the industry.



Conserving Resources. Improving Life.

7002 North 288th Street
Valley, Nebraska 68064-0358 USA
Phone: 402-359-2201 (Ext. 3415)
Fax: 402-359-4429
E-mail: irrigation@valmont.com

International Fax: 402-359-4948
E-mail: vintl@valmont.com

www.valleyirrigation.com

See your local authorized Valley Dealer for complete details.

Valmont, Irrigation has a policy of continuous product improvement and development. As a result, certain changes in standard equipment, options, price, etc. may have occurred after the publication of this brochure. Some photographs and specifications may not be identical to current production. Your local Valley® dealer is your best source for up-to-date information. Valmont Irrigation reserves the right to change product design and specifications at any time without incurring obligations.

©2009 Valmont Industries, Inc., Valley, NE 68064 USA. All rights reserved.

AD10700 BS/CP 1/09